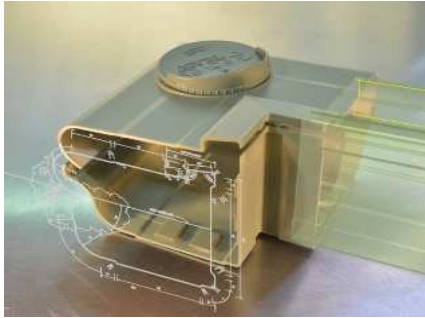


# SERIES 13

## CUSTOMER SUPPORT

# gutter and system components



***Eaves will protect your home***

**Effective 1/10/2016**

Eaves Water System is a quality Australian made product designed to attach directly to the fascia and suitable for all roof styles and types. Manufactured from one piece of strong durable colorbond steel. The fully enclosed profile prevents leaves and debris from entering the gutter and eliminates flooding damage from blockages. Colour matched moulded ASA components connect the metal gutter sections ***for simple installation and a quality finish.***



### **Customer Support**

***Your calls are welcome and we appreciate your feedback.***

Eaves Water System Customer Service and Support team can assist with all enquiries providing advice and assistance to all our Distributors, Stockists, Installers and Consumers.



### **Delivery Guarantee**

Delivery documents should be used to check quantity and colour. Damaged goods or shortages should be reported immediately to Eaves Water System Customer Service and Support on **1800 032 837**.

In all cases replacement items to make good shortages arising from loss, damage, or order and despatch errors will be ***assigned an urgent despatch priority.***



### **Warranty**

Eaves Water System products offer a full 10 year warranty against manufacture defects. Bluescope Steel offer up to 20 years warranty on the colorbond metal. ASA plastic components have been tested for 20 year UV exposure.

***Register your purchase details at [www.eaveswatersystem.com](http://www.eaveswatersystem.com) or 1800 032837.***



### **Recycling**

All Eaves Water System products are 100% recyclable and contain no harmful or dangerous substances. Recycling prevents the waste of potentially useful materials, reduces consumption of raw materials and energy, and reduces pollution. Steel and ASA plastic can be repeatedly recycled, a characteristic that can be claimed by very few materials.

Please take care and responsibly dispose of off cuts and old gutter in a renovation installation.

All Eaves Water System products are suited for the purpose and compliant with Australian, New Zealand and North American building regulations. Care should be taken to ensure Eaves product is installed in accordance with building code and local requirements. Consumers enquiries regarding compliance may be handled directly by our factory trained Installers or directed to ***Customer Services and Support 1800 032837.***



### **Compliance**